

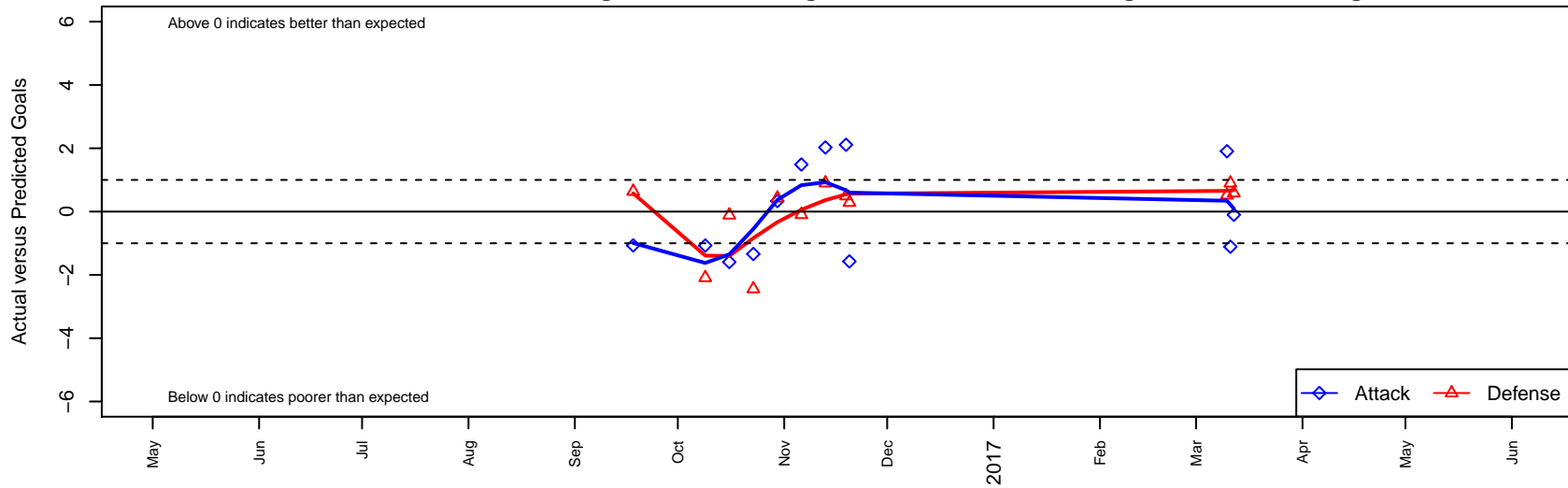
# California Magic SC B99

, CAN  
 B99 total strength=1841  
 attack=45.45 defense=29.95

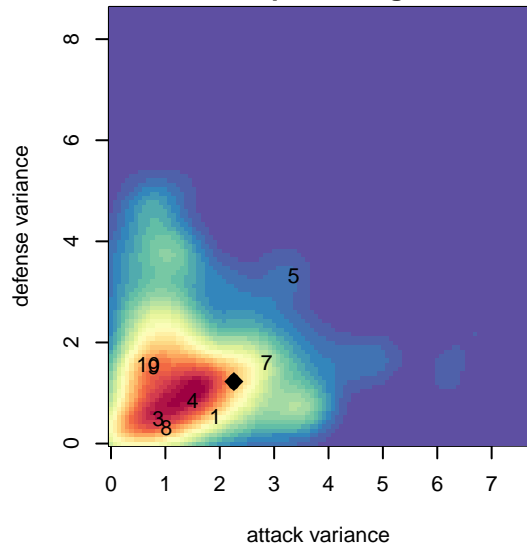
alt names used:  
 CALIFORNIA MAGIC CAL MAGIC 99B  
 CALIFORNIA MAGIC CAL MAGIC 99B (CAN)

Venues played:  
 2016 FWRL CAN CRL U18  
 2016 NV Players Showcase U-18 Treasure Isl

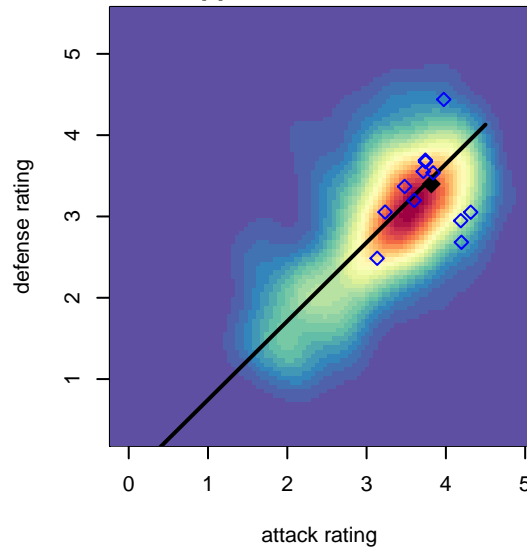
**California Magic SC B99**  
 Dots are actual minus expected GF (blue circles) and GA (red triangles).  
 Blue line is smoothed change in attack strength. Red is smoothed change in defense strength.



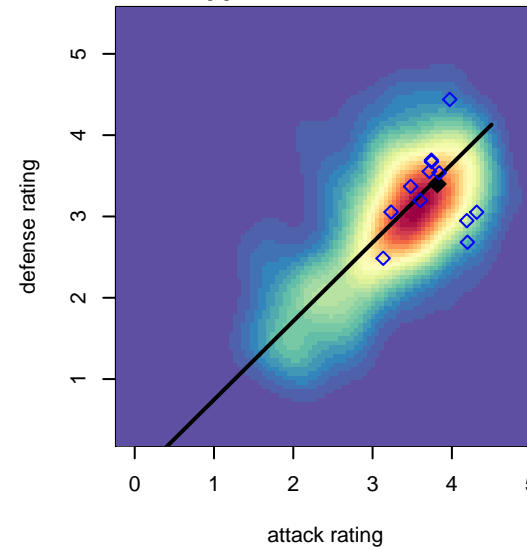
**attack and defense variance (black dot)  
relative to other teams  
and top 10 in region**



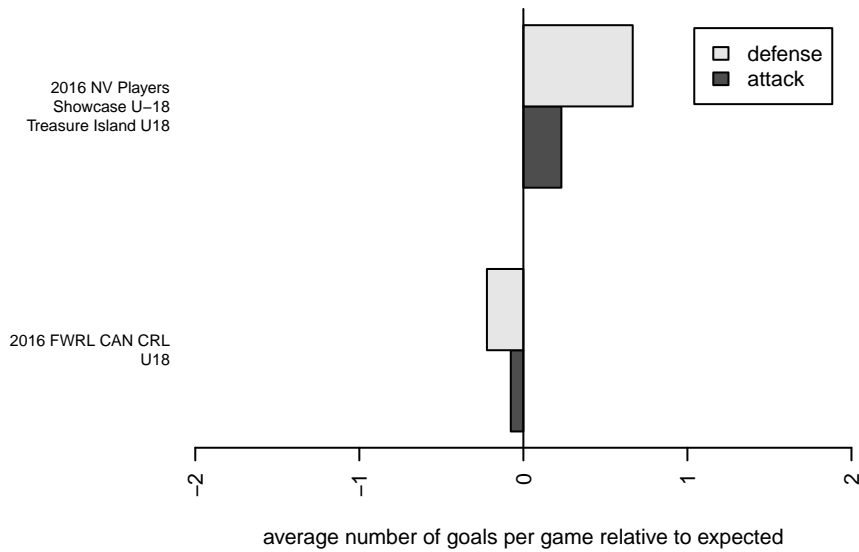
**attack and defense rating  
relative to others at age  
and all opponents in last 13 months**



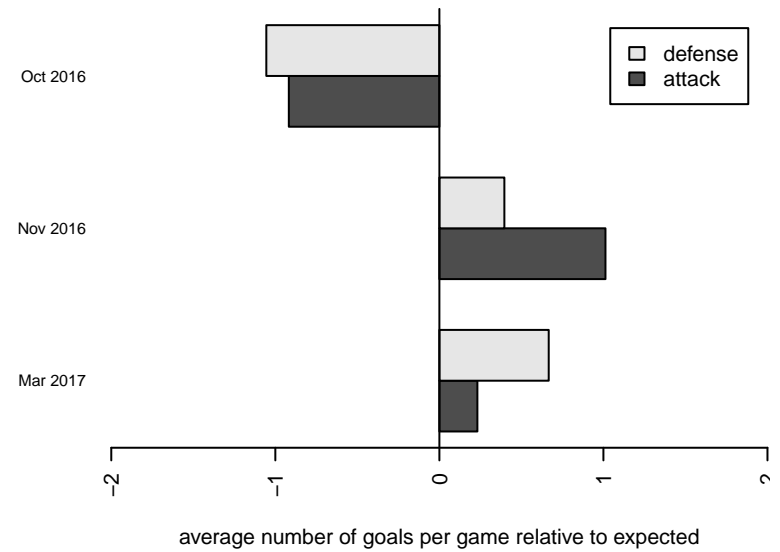
**attack and defense rating  
relative to others at age  
and all opponents in last 13 months**



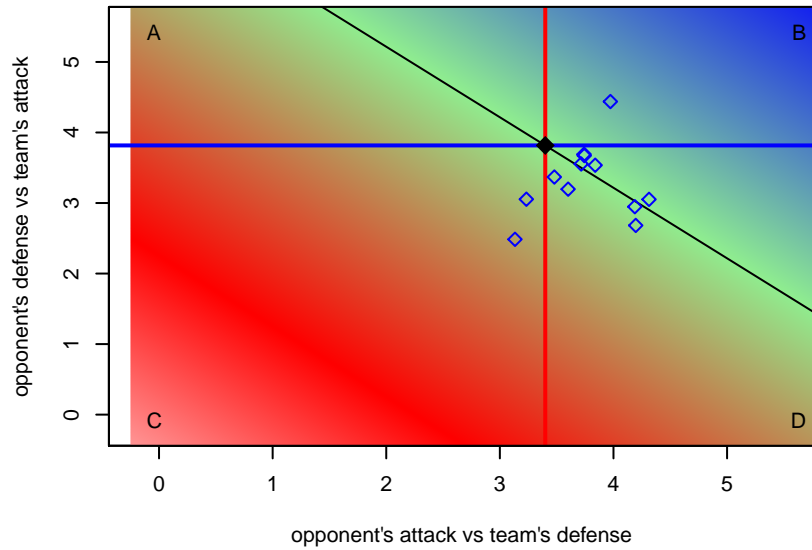
**Performance relative to 13 month average**



**Performance relative to 13 month average**



Distribution of opponents  
 Red = Lose zone, Blue = Win zone, Green = Even  
 Black line separates win/lose zones



lot. A=Neither has attack advantage, B=Opponent has both attack and defense advantage, C=Opponent has both attack and defense disadvantage, D=Both have

<b>late</b>	<b>home</b>		<b>away</b>		<b>venue</b>	<b>pred.home</b>	<b>pred.aw</b>
7-03-12	Excel Soccer Academy B99	1	California Magic SC B99	1	2016 NV Players Showcase U-18 Treasure I	1.58	1.10
7-03-11	California Magic SC B99	1	ANSFE South Florida Elite Red B99	0	2016 NV Players Showcase U-18 Treasure I	2.11	0.90
7-03-10	Solar Chelsea B99	1	California Magic SC B99	3	2016 NV Players Showcase U-18 Treasure I	1.52	1.09
6-11-20	Burlingame Gold B99	1	California Magic SC B99	0	2016 FWRL CAN CRL U18	1.29	1.57
6-11-19	California Magic SC B99	5	San Francisco Mission Green B99	2	2016 FWRL CAN CRL U18	2.89	2.49
6-11-13	Tecos Hayward SC Fire B99	2	California Magic SC B99	4	2016 FWRL CAN CRL U18	2.90	1.97
6-11-06	California Magic SC B99	2	Peninsula SC Galaxy Blue B99	2	2016 FWRL CAN CRL U18	0.51	1.90
6-10-30	South San Francisco United Force B99	1	California Magic SC B99	2	2016 FWRL CAN CRL U18	1.43	1.67
6-10-23	California Northstars B99	5	California Magic SC B99	1	2016 FWRL CAN CRL U18	2.56	2.34
6-10-16	California Magic SC B99	2	Kings Country SC Atletico B99	1	2016 FWRL CAN CRL U18	3.59	0.89
6-10-09	El Camino Real Salinas Pumas B99	4	California Magic SC B99	0	2016 FWRL CAN CRL U18	1.91	1.07
6-09-18	California Magic SC B99	0	Santa Clara Sporting Green B99	1	2016 FWRL CAN CRL U18	1.07	1.64